

Rebecca Homes Ltd

PUTTING PEOPLE IN CONTROL

The Mount, Wood Lane, Yoxall,
Burton on Trent, Staffs DE13 8PH
Tel: 01543 472081 Fax: 01543 472086
24 hour number: 07792 401329
Email: rebecca@homeslimited.fsife.co.uk
www.rebeccahomes.co.uk

December 2014

Dear

Care Home
The Mount, for long term residential care, day support and respite care, age 18+
Community Support
age 8+
Isle of Wight Holiday Home
for use by individuals using Rebecca Homes services and a holiday rental home
Company number
04573091

Celebrating 2014

2014 has been a really positive, progressive and busy year!

A big thank you to everyone who has had an input into our achievements during 2014, and a big thank you to the people who use our services.

Here is a list of just some of our achievements during 2014.....

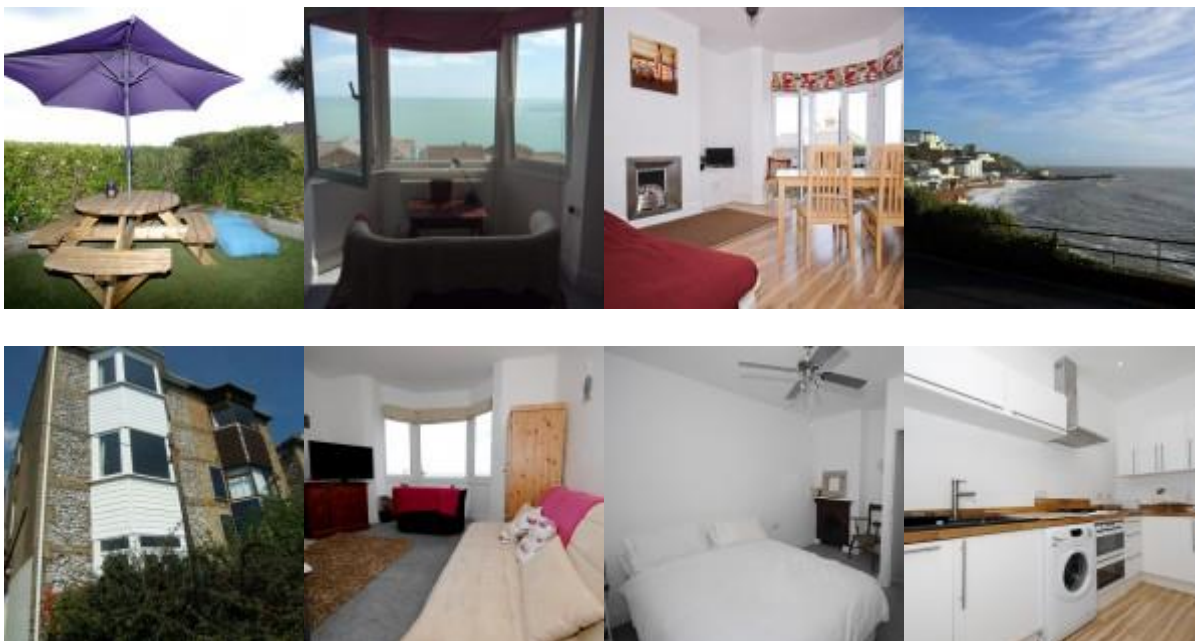
- January 2014 we had an inspection by the Care Quality Commission this inspection was unannounced. We were inspected for the following, care and welfare of people who use services, meeting nutritional needs, safety and suitability of premises, support workers and complaints. The result from the inspection was that all standards inspected were met at The Mount care home.
- March 2014 we purchased the Isle of Wight holiday home, which is has stunning sea views and is set in a beautiful location. Many people using Rebecca Homes services have stayed in the holiday home. Also staff and associates of the company have enjoyed discounted holidays. Rebecca Homes are proud of this new home and the enjoyment it has brought to many. The company has had much appreciation from people using the holiday home.
- May 2014 Activity Co-ordinator Fiona Bradbury was entered into the National learning disability awards. Fiona attended a gala evening at Edgbaston cricket ground Birmingham. Fiona was awarded a runner up prize. This was for all the outstanding activities she organised throughout 2013 such as meeting some presenters at Bid TV in London this was a client's dream.
- July 2014 bedroom ten was passed and registered with CQC, this room is the new respite room. This room is nearly constantly occupied.
- September 2014 Rebecca Homes purchased a lovely outside wooden seating area that allows seating outside with some shelter from the rain and sun. The seating area has been regularly used since it was brought.
- Summer 2014 new equipment has been brought for the outside games area, football nets, trampoline, monkey swing and tennis nets. The monkey swing has been a wonderful addition to our outside games area. Many community clients have enjoyed using this.

- September 2014 our new training and art room was completed. This room is located at The Mount, it is for staff and residents living at The Mount to use. This room has been used many times for large staff groups to complete training. The room has some great equipment such as a computer projector and screen and art equipment. We hope to use this room regularly during 2015.
- November 2014, the exterior of The Mount was fully painted this has significantly improved the appearance of the building.

Please see below pictures of some of our achievements during 2014.
 Pictures of new items purchased for outside at The Mount.



Pictures of Isle of Wight holiday home and Ventnor sea front. The sea front is about ten minutes' walk from the house.



For the latest news regarding Rebecca Homes Ltd which we continually update please visit www.rebeccahomes.co.uk and click on the news section of the website.

Many Thanks for supporting and/or using Rebecca Homes services. We hope to make many more achievements and improvements throughout 2015.

Yours enthusiastically

Rebecca Cork Bsc (Hons)
 Company Secretary and Business Manager

